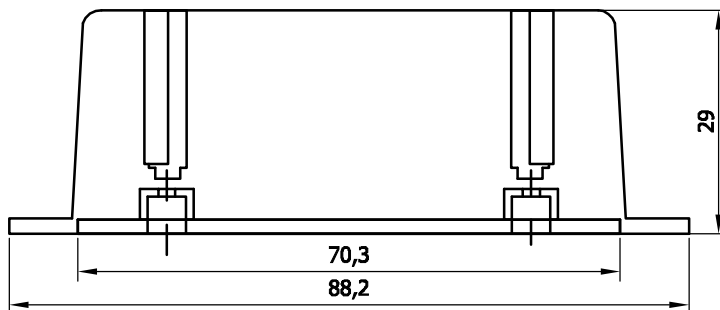
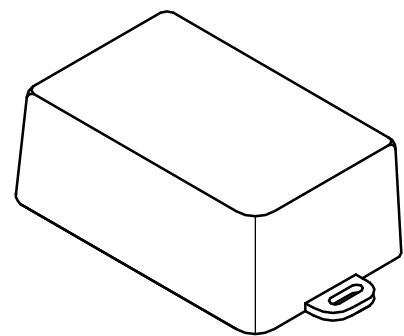
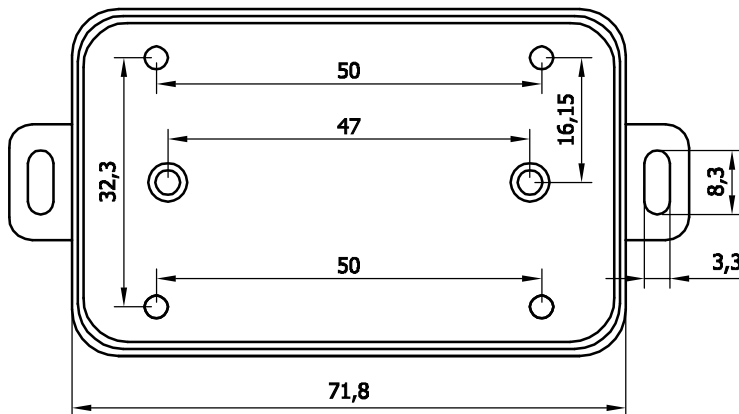
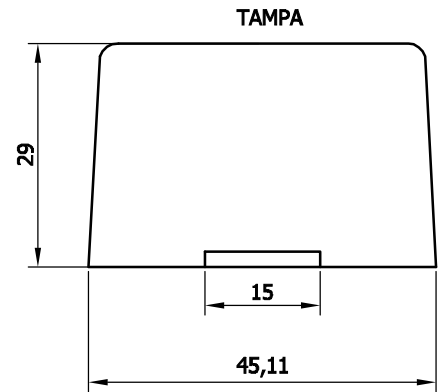
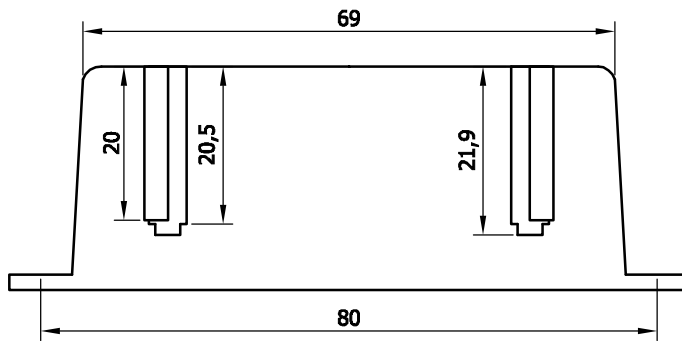
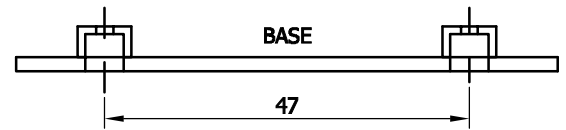
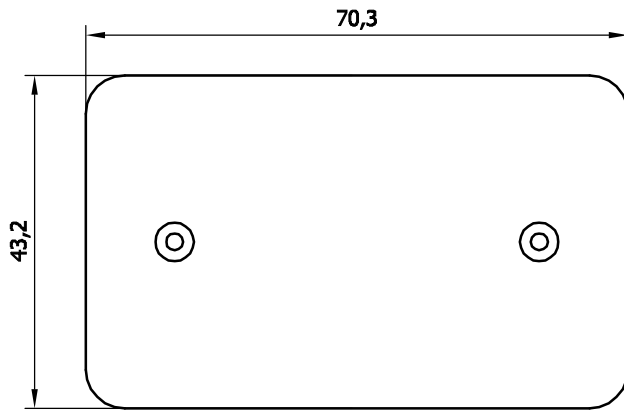


SR-17A



Obs: Utilizar parafuso 2,2mmx8mm ou 2,2mmx9,5mm

0	15/06/2012	Liberação
Rev.	Data	Descrição de Revisão

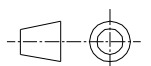
**SANTA RITA
CAMPINAS**

Título: Caixa SR-17A

Desenho nº: **SR-17A**

Folha:
1 de 1

Escala:
S/E



Arquivo: \\19

Desenhado por: Radamés

Revisado por: R. Toth

Aprovado por: Toth

PADRAO4.DWG

Formato A4 (210 x 297mm)